

# WarmLIVING.ie

KEEPING YOU WARM AND SAVING YOU MONEY

Issue No. 2

## New Increased Grants Now Available for Your Home

**Everything you  
need to know  
about external  
home insulation**

**PLUS | A Rated Energy Efficient Household Windows  
| Plumbing & Heating Services | Painting & Decorating Services  
| Energy Saving Replacement Glass & Conservatories**

Call 01 848 3115 to request a FREE Magazine or visit [www.warmliving.ie](http://www.warmliving.ie)  
to download a personal copy or receive a copy by post



# Welcome to the second edition of Ireland's Home External Insulation Catalogue



## Hello and Welcome to the second edition of Warmliving.ie,

My name is Noel Whelan and I'm the owner of Absolute Acrylics Ltd. We specialize in External Insulation, Attic insulation and Boiler upgrades.

Over the last 10 years working in the Insulation industry we have successfully Insulated over 700 houses in the Dublin and surrounding areas. We have successfully applied and received Seai grants for all our clients.

Along the way we have met and worked with several other professionally minded Sub Contractors, General Contractors and Architects.

We have also worked with Conservatory Designs/ Brightspace on several projects and have been impressed with their efficiency and cost competitiveness. UltraWarm is a glazing replacement service and specialise in A Rated glass panel replacement and full door and window installation.

Dave Gaffney of DG Plumbing and Heating has been Installing New High Condensing Boilers and setting up zoned areas with Seai grant approval for Absolute Acrylics along with his own work. DG Plumbing and heating are fully registered RGI and Seai and Insured.

Chris Smith of Empire Painting and Decorating is a young professional Decorator with energy and passion for his work. A man who takes pride in his work is a master craftsman. Warmliving.ie is a collection of professional contractors who work for the general public as individuals or together as a team.

Kind Regards  
Noel Whelan

## Special Thanks to our contributors



*The colder it is outside, the warmer it is inside*

Contact: Noel Whelan  
Absolute Acrylics Limited,  
8 Edenmore Grove, Raheny, Dublin 5.  
M: 086 365 4911 Tel: 01 848 3115  
Email: info@abac.ie  
Web: www.abac.ie



Brightspace at Conservatory Designs  
Johnstown Garden Centre,  
Naas  
Co. Kildare.  
Tel: 045 844002  
Web: www.conservatorydesigns.ie



Johnstown Garden Centre,  
Naas,  
Co. Kildare.  
Tel: 01 5311 279  
Web: www.ultrawarmglazing.ie



Contact: David Gaffney  
67 Taylours Point, Rush, Co. Dublin.  
Mobile: 086 842 7171 Tel: 01 894 9978  
Email: david@dgplumbing.ie  
Web: www.dgplumbing.ie



Contact: Chris Smyth  
26 Ministers Road Lusk Co. Dublin.  
Phone: 085 835 5396  
Email: info@empirepaintinganddecorating.ie  
Web: www.empirepaintinganddecorating.ie

# 35% Grant available from SEAI for Energy Saving work on your home

This winter Credit Unions and SEAI are teaming up to help homeowners reduce their energy bills when upgrading, Boiler, Heating controls, Windows and Insulation.

For every energy efficient loan drawn down at your credit unions reduced rate SEAI will give you a 35% grant towards the cost of the works.

## How to get Grants and Funding

1. We will carry out a FREE SURVEY of your home and advise you on the best energy saving solutions.
2. Process your Grant Application with SEAI securing you 35% in Grant Aid

Various Credit Unions offer reduced loan rates and you could qualify for the 35% SEAI grant. Normal lending Terms &

Conditions apply. Loans will be subject to affordability and your Credit Union is regulated by the Central Bank of Ireland.

If you are not already a Credit Union member, joining is easy and can be done during the loan application process.

## In a nutshell

You get a reduced loan rate, more grant aid, and are saved the hassle of making an application to SEAI for refunds or grants

***So call Absolute Acrylics today for further details and to arrange your FREE home survey telephone: 086 365 4911***

# Contractor Rating

SEAI is pleased to note your good performance and trusts that this level will be maintained in the future.



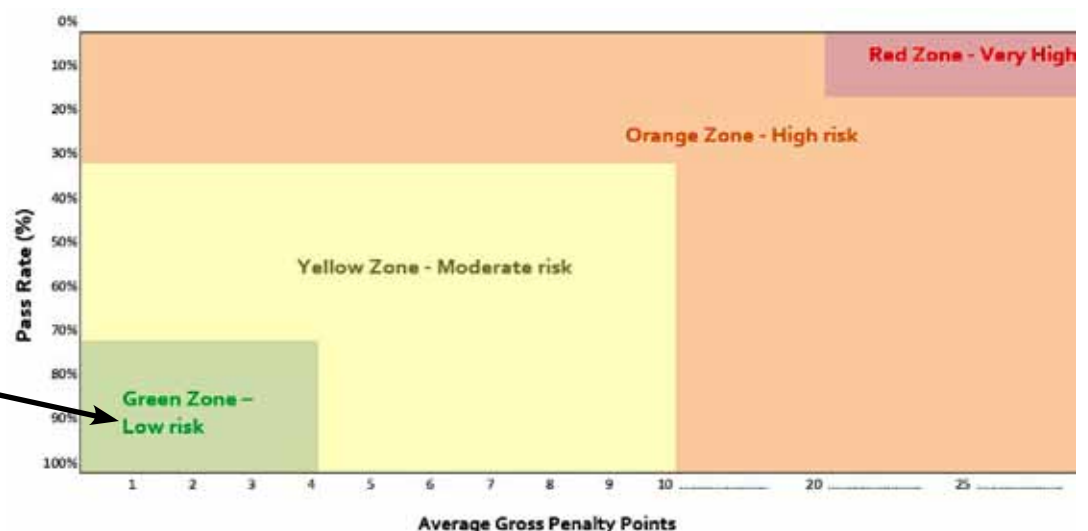
*The colder it is outside, the warmer it is inside*

We are classified as a Green Zone First Class Contracting Company by the SEAI

## Quality Assurance and Disciplinary Procedure (QADP) Scorecard and Advisory Note

### Contractor Details

Contractor ID:	10542
Company Name:	Absolute Acrylics Ltd
Date of Issue:	26-01-2018
Review Period:	From July 26, 2017 to January 26, 2018





## What our customers have to say...

### Edel and Dermot

**What made you think or consider External Insulation for your home?**

The house was very cold and very damp. We were losing a lot of heat through the walls as the house has not been insulated properly. We have sub floors a lot of heat was being lost through house.

**Did you avail of the SEAI and Credit union 35% grant scheme?**

Yes we did.

**Do you feel that the SEAI and Credit Union 35% scheme was financially worth- while?**

Absolutely, basically meant for us, we were able to get more work done otherwise we would not been able to afford all three – the external insulation attic and boiler up-grade done without the aid of the finance scheme from the SEAI and the Credit Union at that time.

**Did you have to complete all the paper work for the Grants?**

No. The Credit Union took care of all the necessary paperwork for us.

**How did you hear about Absolute Acrylics Ltd?**

A recommendation came from a family member.

**What measures did you have installed, External Insulation, Attic Insulation, Boiler and Heating System Up-grade?**

We had all three done - External Insulation, Attic and our boiler upgraded.

**How do you feel the project was supervised and the overall standard of workmanship?**

The job was very well organized. The workmanship was excellent. The men were very reliable. Good communication skills. Overall, we were very happy with the work and workmanship of Absolute Acrylics.

**Can you feel the difference in your home?**

Absolutely! We have no more dampness in the house. No more loss of heat. We can actually feel the warmth in the house. Rarely turn the heating on anymore. The draft and dampness are totally gone from the house, which was a big issue for us!

**Did you receive a Guarantee?**

Yes we did. We received a 10 year Guarantee from Absolute Acrylics Ltd.

**Would you recommend Absolute Acrylics Ltd.?**

Absolutely and if I am totally honest would not recommend any other Company to do the External Insulation.





## Sandra Hanapy

### What made you think or consider External Insulation for your home?

House was very cold especially the Gable wall is big. The walls were freezing cold, front, side and back of house and External Insulation was the best way forward for us.

### How did you hear about Absolute Acrylics Ltd?

I had seen Absolute Acrylics' vans in the area and somebody told me that they saw house being External Insulated in Artane. I went to Artane to take a look at the house. I was very happy in what I saw and then I contacted Absolute Acrylics.

### Did you have to complete any paper work for the SEAI Grants?

No, Absolute Acrylics did all the paperwork for me.

### What measures did you have installed?

I had A Rated Windows installed and Patio doors front and back and the External Insulation.

### How did you feel the project was supervised and the over-all standard of workmanship?

Standard of workmanship was excellent. No problems at all from start of the house until it was finished. The men

were very efficient. They were very punctual; they started work the same time every morning and finished the same time every evening. They cleaned up after them. They were very polite and no bother having them around working on the house

### How does your house looks after the External Insulation had been completed

It looks fantastic. I have received numerous of complements from my neighbours on my road. Even people I don't even know have approached me and telling me how well my house looked.

### Did you receive a Guarantee

Yes I did. I received a 10 year guarantee.

### Would you recommend Absolute Acrylics

Yes definitely and I would highly recommend Absolute Acrylics. The overall standard of the workmanship was excellent.



*The colder it is outside, the warmer it is inside*

# Semi Detached Homes

## Moatfield/Coolock

This semi detached house in Moatefield, Coolock was finished with white (80%) and 20% black marble chip dashing to the front upper level.

The dashing was embedded in to a white receiver/base coat.

Quoin Stones were installed on both sides.

The lower section and gable and back were finished with acrylic render in beige grey. We also installed white powder coated aluminium window sills with patent reveals.

The insulation used here was 100mm Grey EPS with a U Value of 0.27. Heating bills were reduced by 52%.

Utility fees not Included.



<b>Gross Total</b>	<b>€15,500.00</b>
<b>Less Seai Grant transferred over to us</b>	<b>€-4,500.00</b>
<b>Final cost to Home Owner</b>	<b>€11,000.00</b>



**ABSOLUTE ACRYLICS**  
EXTERNAL INSULATION  
*Professionals*

*The colder it is outside, the warmer it is inside*

## Beaumont



This semi detached house in Beaumont was finished with white (100%) marble chip dashed finish to top section at front.

The dashing was embedded in to a White Receiver/Base coat.

White patent reveals were installed.

The brick work at the front was cavity pumped.

We also installed white powder coated aluminium window sills.

We finished the back and gable with a white acrylic render.

The insulation used here was 100mm Grey EPS with a U Value of 0.27. Heating bills were reduced by 49%.

Utility fees not Included.

<b>Gross Total</b>	<b>€13,100.00</b>
<b>Less Seai Grant transferred over to us</b>	<b>€-4,500.00</b>
<b>Final cost to Home Owner</b>	<b>€8,600.00</b>



# Semi Detached Homes

## Ballyfermot



This semi detached house in Ballyfermot was finished with white (80%) and 20% Scottish Red Marble Chip dashed finish to the complete House. The dashing was embedded in to a White Receiver/Base coat. Quion Stones were added to the front for design and detail. We also installed a decorative band and arch above the front door.

House size 105m<sup>2</sup>. We also installed White Powder coated Aluminium window sills.

The Insulation used here was 100mm Grey EPS with a U Value of 0.27. Heating bills were reduced by 52%.

Utility fees not Included.

<b>Gross Total</b>	<b>€16,000.00</b>
<b>Less Seai Grant transferred over to us</b>	<b>€-4,500.00</b>
<b>Final cost to Home Owner</b>	<b>€11,500.00</b>

## Dundrum

This semi detached house in Dundrum was finished with Cream Acrylic Render.

The internal garage wall was also insulated using 100mm K5 Phenolic Insulation.

We also installed White Powder coated Aluminium Window sills with patent reveals. 110m<sup>2</sup> Area

The insulation used here was 150 mm Grey EPS with a U Value of 0.21

Heating bills were reduced by 57%.

Utility fees not Included.



<b>Gross Total</b>	<b>€16,200.00</b>
<b>Less Seai Grant transferred over to us</b>	<b>€-4,500.00</b>
<b>Final cost to Home Owner</b>	<b>€11,700.00</b>

# Semi Detached Homes

## Clondalkin

This semi detached house in Clondalkin was converted in to a four bedroom house. The front was finished with White (90%) 10% Brown Marble Chip Dashing. The dashing was embedded in to a white receiver/base coat. Replicated brick work at house front was russet with grey pointing. We finished the back with a coloured acrylic render (Cream/ Vanilla). We also installed white powder coated aluminium window sills with patent reveals at the back of the house. Quoin Stones at porch and sides of house were finished with granite effect to give a unique look. The front window sills were also finished in a granite effect. This job was a full refurbishment with the windows changed and new porch built. 139m<sup>2</sup> area. The Insulation used here was 100mm Grey EPS with a U Value of 0.27. Heating bills were reduced by 54%.



<b>Gross Total</b>	<b>€18,200.00</b>
<b>Less Seai Grant transferred over to us</b>	<b>€-4,500.00</b>
<b>Final cost to Home Owner</b>	<b>€13,700.00</b>

## Clontarf

Utility fees not Included  
All our work comes with a 10 year guarantee.



<b>Gross Total</b>	<b>€ 15,200.00</b>
<b>Less Seai Grant transferred over to us</b>	<b>€-4,500.00</b>
<b>Final cost to Home Owner</b>	<b>€10,700.00</b>

This semi detached house in Clontarf was finished with White Acrylic finish. New Shutters were bought and fitted. (Front) We also installed white powder coated aluminium window sills. We installed replicated brick work at the front. The colour was Russet with Grey Pointing. The Insulation used here was 100 mm Grey EPS with a U Value of 0.27.

Heating bills were reduced by 48%.  
Utility fees not Included.





## Kimmage

This end of terrace House in Kimmage was finished with cream acrylic render, The White Quionn Stones at the front added a nice design feature. We also did patent reveals in white. We also installed white powder coated aluminium window sills. We finished the back and gable with cream acrylic render. This End of Terrace was 95m<sup>2</sup> in Size.

The Insulation used here was 100mm Grey EPS with a U Value of 0.27.

Heating bills were reduced by 50%.

Utility fees not Included.



*The colder it is outside, the warmer it is inside*



Gross Total	€13,500.00
Less Seai Grant transferred over to us	€-4,500.00
Final Cost to Home Owner	€9,000.00

## Dashed in Dundrum

This semi detached house in Dundrum was finished with white (100%) marble chip dashed finish. The complete house was dashed finish. The dashing was embedded in to a White Receiver/Base coat.

We also installed white powder coated aluminium window sills, coloured to match the new windows. RAL 9001 Cream 125m<sup>2</sup>

The insulation used here was 120mm rockwool with a U Value of 0.27.

Heating bills were reduced by 58%.

Utility fees not Included.



Gross Total	€17,900.00
Less Seai Grant transferred over to us	€-4,500.00
Final cost to Home Owner	€13,400.00

# Semi Detached Homes

## Tallaght

This semi detached house in Tallaght was finished with white (80%) and 20% black marble chip dashed finish to the complete house.

The dashing was embedded in to a white receiver/base coat.

We also installed white powder coated aluminium window sills. (Black) 120m<sup>2</sup> This is a 3 bedroom semi detached house.

The insulation used here was 100 mm Grey EPS with a U Value of 0.27.

Heating bills were reduced by 52%.

Building energy rating issued on every house (BER).

Utility Fees not Included.  
All our Work comes with a 10 Year guarantee.



<b>Gross Total</b>	<b>€17,000.00</b>
<b>Less Seai Grant transferred over to us</b>	<b>€-4,500.00</b>
<b>Total Cost to Home Owner</b>	<b>€12,500.00</b>

## The Donaghies



This semi detached house in The Donaghies was finished with coloured acrylic finish.

We also installed white powder coated aluminium window sills with patent reveals. The house was 110m<sup>2</sup> and is a 3 bedroom Semi detached.

The Insulation used here was 100 mm Grey EPS with a U Value of 0.27.

Heating bills were reduced by 50%.  
Building energy rating issued with every job. (BER)

Utility fees not Included.

<b>Gross Total</b>	<b>€ 14,500.00</b>
<b>Less Seai Grant transferred over to us</b>	<b>€-4,500.00</b>
<b>Final cost to Home Owner</b>	<b>€10,000.00</b>



*The colder it is outside, the warmer it is inside*



# Semi Detached Homes

## Glenageary



This semi detached house in Glenageary was finished with white acrylic render. We replicated the brick using two different colours in a staggered effect. Rustic and Cream. We also installed white powder coated aluminium window sills. 125m<sup>2</sup>. This was a 4 Bedroom Semi detached house.

The Insulation used here was 100mm Grey EPS with a U Value of 0.27.

Heating bills were reduced by 56%.

BER with every house. Utility Fees not Included.



*The colder it is outside, the warmer it is inside*

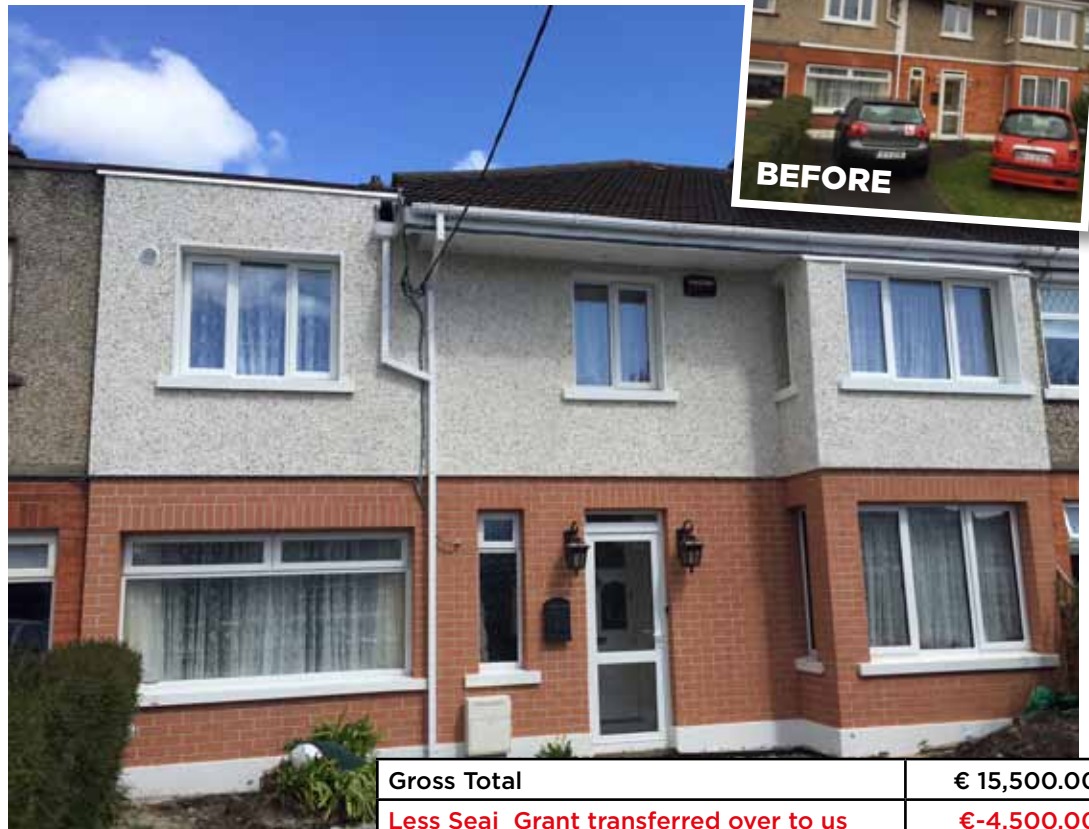
## Whitehall

This semi detached house on Collins Ave in Whitehall was finished with white (80%) and 20% black marble chip dashed finish. (front Top Section) The dashing was embedded in to a White Receiver/Base coat. The lower front section was finished in Tuscany Render Brick with light grey pointing. We also installed white powder coated aluminium window sills. We finished the back with a coloured acrylic render (Vanilla) 110m<sup>2</sup>.

The insulation used here was 100mm Grey EPS with a U Value of 0.27. Heating bills were reduced by 50%.

BER Cert Included.

Utility fees not Included.



Gross Total	€ 15,500.00
Less Seai Grant transferred over to us	€-4,500.00
Final cost to Home Owner	€11.000.00

# Semi Detached Homes

## Mount Merrion

This semi detached house in Mount Merrion was finished with white (100%) marble chip dashed finish to upper level at front of house.

The dashing was embedded in to a grey receiver/base coat.

We installed Quion Stones at house front. (In Line)

We also installed white powder coated aluminium window sills ivory to match new windows.

We finished the back and gable walls with a coloured acrylic render (Beige Grey)

We used Russet render Brick with white pointing at the house front lower level. 140m<sup>2</sup>. This house is 4 Bedroom Semi detached.

The Insulation used here was 100mm Grey EPS with a U Value of 0.27.

Heating bills were reduced by 50%.

BER included.

Utility Fees not Included.



<b>Gross Total</b>	<b>€19,000.00</b>
<b>Less Seai Grant transferred over to us</b>	<b>€-4,500.00</b>
<b>Final Cost to Home Owner</b>	<b>€14,500.00</b>

## Donaghmede



This semi detached house in Donaghmede Ave was finished with White (75%) and 25% Brown Marble Chip dashed finish to complete house.

The dashing was embedded in to a White Receiver/Base coat.

We installed Quoin stones at both side of front. (Staggered)

We also installed render brick at front panels. (Russett with red pointing)

We also installed white powder coated aluminium window sills. (Dark Brown )

The insulation used here was 100 mm Grey EPS with a U Value of 0.27.

Heating bills were reduced by 50%.

BER included.

Utility fees not Included.

<b>Gross Total</b>	<b>€ 16,200.00</b>
<b>Less Seai Grant transferred over to us</b>	<b>€-4,500.00</b>
<b>Final cost to Home Owner</b>	<b>€11,700.00</b>



# Semi Detached Homes



## Santry

This semi detached house in Santry was finished beige grey coloured acrylic render finish. Quoin Stones were added to both sides at house front. (White/Staggered style) Patent reveals were installed. We also installed white powder coated aluminium window sills

The insulation used here was 100mm Grey EPS with a U Value of 0.27. Heating bills were reduced by 48%. BER cert include. Utility fees not Included.

Gross Total	€15,000.00
Less Seai Grant transferred over to us	€-4,500.00
<b>Final cost to Home Owner</b>	<b>€10,500.00</b>



*The colder it is outside, the warmer it is inside*

## Artane

This semi detached house in Donaghmede was finished with a special mix of white, black, brown dashing in a grey base coat. Quoin Stones were installed (in Line). We also installed white powder coated aluminium window sills with patent reveals. We finished the back and gable walls with a coloured acrylic render (Pale Grey) 130m<sup>2</sup>. This was a 4 Bedroom semi detached house with converted garage.

The Insulation used here was 100mm Grey EPS with a U Value of 0.27.

Heating bills were reduced by 52%  
BER cert included

Utility fees not Included.  
(ESB and Board Gas if required).



Gross Total	€17,700.00
Less Seai Grant transferred over to us	€-4,500.00
<b>Final cost to Home Owner</b>	<b>€13,200.00</b>

# End of Terrace



## Finglas

This end of terrace house in Finglas was finished with white (75%) and 25% brown marble chip dashed finish. The dashing was embedded in to a white receiver/base coat.

We also installed white powder coated aluminium window sills.

We finished the back with a coloured acrylic render (Cream/Vanilla)

Total area was 110m<sup>2</sup>

In line Quoin Stones were installed at the House front. Replicated brick effect was used on the lower front panels.

The insulation used here was 100mm Grey EPS with a U Value of 0.27.

Heating bills were reduced by 50%.

Utility fees not Included.

Gross Total	€15,200.00
Less Seai Grant transferred over to us	€-4,500.00
Final cost to Home Owner	€10,700.00

## End of Terrace in Ballyfermott

This end of terrace house in Ballyfermott was finished with white (75%) and (25%) brown marble chip dashed finish.

The dashing was embedded in to a white receiver/base coat.

The complete house was dashed finish.

Quoin Stones were installed at house front on both side in a staggered formation.

We also installed white powder coated aluminium window sills. (Cream powder coat to match the windows)

Total wall area was 90m<sup>2</sup>.

The insulation used here was 100mm Grey EPS with a U Value of 0.27.

Heating bills were reduced by 53%

Utility fees not Included  
ESB or Gas

BER included



Gross Total	€14,200.00
Less Seai Grant transferred over to us	€-4,500.00
Final cost to Home Owner	€9,700.00



# End of Terrace

## Marino

This end of terrace house in Marino, D3 was finished with white (90%) and (10%) black marble chip dashed finish.

The dashing was embedded in to a stoney grey receiver/base coat.

This gives an aged look.

The complete house was dashed finish.

We also installed white powder coated aluminium window sills.

120m<sup>2</sup> wall area.

The insulation used here was 100 mm Grey EPS with a U Value of 0.27.

Heating bills were reduced by 50%.

Utility fees not Included.



Gross Total	€16,900.00
Less Seai Grant transferred over to us	€-4,500.00
Final Cost to Home Owner	€12,400.00



*The colder it is outside, the warmer it is inside*

## Killester



This end of terrace house in Killester was finished with a coloured acrylic render. White patent reveals were also installed. We finished the complete house with a coloured acrylic render (CreamVanilla)

The house size was 95m<sup>2</sup>

We also installed white powder coated aluminium window sills.

The insulation used here was 100 mm Grey EPS with a U Value of 0.27.

Heating bills were reduced by 53%.

Building Energy Rating certificate Included on all jobs.

Utility fees not Included  
ESB or Board gas.

Gross Total	€13,100.00
Less Seai Grant transferred over to us	€-4,500.00
Final Cost to Home Owner	€8,600.00



## Ballyfermot

This end of terrace house in Ballyfermott was finished with white (75%) and (25%) brown marble chip dashed finish. The dashing was embedded in to a white receiver/base coat.

The complete house was dashed finish. Quoin Stones were installed at house front on both side in a staggered formation.

We also installed cream Powder coated Aluminium Window sills.  
(Cream powder coat to match the windows)  
Total wall area was 100m<sup>2</sup>.

The Insulation used here was 100 mm Grey EPS with a U Value of 0.27.  
Heating bills were reduced by 53%.  
Utility fees not Included  
ESB or Gas  
BER included.

Gross Total	€16,400.00
Less Seai Grant transferred over to us	€-4,500.00
<b>Total cost to Home Owner</b>	<b>€11,900.00</b>

## Mid Terrace Donaghmede

This mid terrace house in Donaghmede was finished with white (90%) and 10% Scottish Red Marble Chip dashed finish. The dashing was embedded in to a white receiver/base coat.

We also installed white powder coated aluminium window sills.

We finished the back with a coloured acrylic render (Cream/Vanilla)

The Insulation used here was 100mm Grey EPS with a U Value of 0.27.

Heating bills were reduced by 50%.

Utility fees not Included.



Gross Total	€8,600.00
Less Seai Grant transferred over to us	€-2,700.00
<b>Total cost to Home Owner</b>	<b>€5,900.00</b>



## Coolock

This mid terrace house in Coolock was finished with a black (10%) and white (90%) marble chip dashed finish. The dashing was embedded in to a stone grey receiver/base coat. We also installed black powder coated aluminium window sills. Dashed finish to Front and Back of House. 65m<sup>2</sup> Area. The insulation used here was 100mm Grey EPS with a U Value of 0.27.

Heating bills were reduced by 52%.

Board Gas or ESB fees not included.



*The colder it is outside, the warmer it is inside*



Gross Total	€10,400.00
Less Seai Grant transferred over to us	€-2,700.00
<b>Total cost to Home Owner</b>	<b>€7,700.00</b>

## Inchicore

This mid terrace house in Inchicore was finished with a cream acrylic render finish.

We also installed white powder coated aluminium window sills.

We finished the back with the same coloured acrylic render (Cream/Vanilla).

The Insulation used here was 100 mm Grey EPS with a U Value of 0.27.

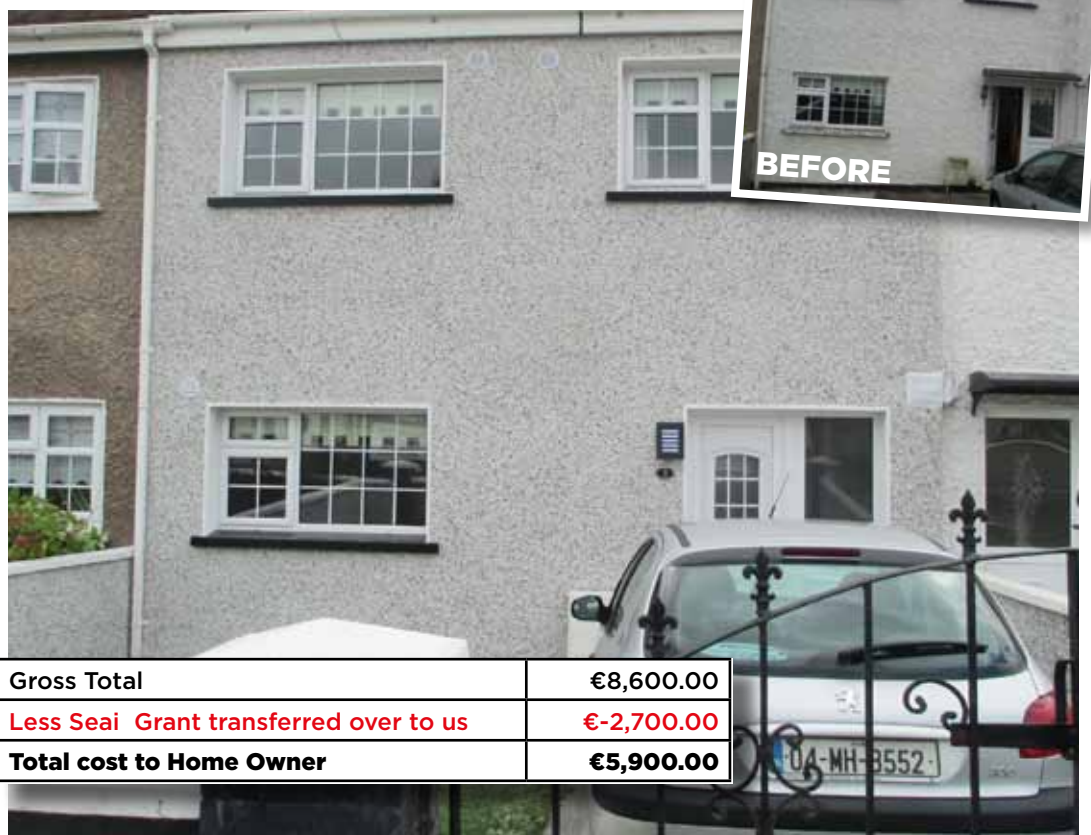
Heating bills were reduced by 53%.

Utility fees not Included.



Gross Total	€7,900.00
Less Seai Grant transferred over to us	€-2,700.00
<b>Total cost to Home Owner</b>	<b>€5,200.00</b>

# Mid Terrace



## Finglas South

This mid terrace house in Finglas South was finished with a black (10%) and white (90%) marble chip dashed finish. The dashing was embedded in to a stone grey receiver/ base coat. We also installed black powder coated aluminium window sills.

The insulation used here was 100mm Grey EPS with a U Value of 0.27.

Heating bills were reduced by 55%.

Board gas fee not Included.

BER included.



*The colder it is outside, the warmer it is inside*

Gross Total	€8,600.00
Less Seai Grant transferred over to us	€-2,700.00
<b>Total cost to Home Owner</b>	<b>€5,900.00</b>

## Edenmore

This mid terrace house in Edenmore/Raheny was finished with vanilla acrylic render. The reveals were finished with white acrylic.

We also installed white powder coated aluminium window sills. All new down pipes were install at no extra cost.

Air vents are Installed in every room. (All Jobs)

The insulation used here was 100 mm Grey EPS with a U Value of 0.27.

Heating bills were reduced by 48%.

Utility fees not Included.



Gross Total	€8,700.00
Less Seai Grant transferred over to us	€-2,700.00
<b>Total cost to Home Owner</b>	<b>€6,000.00</b>



# Detached

## Dalkey

This detached house in Dalkey was finished with coloured acrylic render finish.

We also installed white powder coated aluminium window sills.

We finished the back with a coloured acrylic render (Cream).

The insulation used here was 100mm Grey EPS with a U Value of 0.27.  
The house was 200m<sup>2</sup>.

Heating bills were reduced by 55%.

Utility fees not Included.



Gross Total	€24,700.00
Less Seai Grant transferred over to us	€-6,000.00
<b>Total cost to Home Owner</b>	<b>€18,700.00</b>

## Raheny

This detached house in Raheny was finished with coloured acrylic render.

We also installed white powder coated aluminium window sills.

We finished the house with a coloured acrylic render (Off White Ivory)  
The house size was 170m<sup>2</sup>.

The insulation used here was 100mm Grey EPS with a U Value of 0.27.

Heating bills were reduced by 50%.

Utility fees not Included.



Gross Total	€22,000.00
Less Seai Grant transferred over to us	€-6,000.00
<b>Total cost to Home Owner</b>	<b>€16,000.00</b>

# Detached



## Mount Merrion

This detached house in Mount Merrion was finished with white (75%) and 25% brown marble chip dashed finish to the Front. The dashing was embedded in to a white receiver/base coat. We used almond acrylic render on the sides and back.

We also installed white powder coated aluminium window sills. The house size was 115m<sup>2</sup>. The insulation used here was 100mm Grey EPS with a U Value of 0.27.

Heating bills were reduced by 52%.

Utility fees not Included.



*The colder it is outside, the warmer it is inside*

## Deansgrange

This detached house in Deansgrange was finished with white (75%) and 25% brown marble chip dashed finish. The dashing was embedded in to a white receiver/base coat. We also installed white powder coated aluminium window sills. We finished the back and gable walls with a coloured acrylic render (Almond). Large detached 180m<sup>2</sup>. The insulation used here was 100mm Grey EPS with a U Value of 0.27. Heating bills were reduced by 54%.

Utility fees not Included.



Gross Total	€24,000.00
Less Seai Grant transferred over to us	€-6,000.00
<b>Total cost to Home Owner</b>	<b>€18,000.00</b>



## Donaghmede

This detached house in Donaghmede was finished with durite marble chip dashed finish. The dashing was embedded in to a white receiver/base coat.  
We installed staggered Quoin Stones to create a final effect.

We also installed white powder coated aluminium window sills.

We finished the back and gable walls with a coloured acrylic render (Cream/Vanilla)

Detached house 155m<sup>2</sup>.

The insulation used here was 100 mm Grey EPS with a U Value of 0.27.  
Heating bills were reduced by 50%.

Utility fees not Included.



Gross Total	€21,500.00
Less Seai Grant transferred over to us	€-6,000.00
<b>Total cost to Home Owner</b>	<b>€15,500.00</b>

## Kildare

This detached bungalow in Kildare was finished with a coloured acrylic render.

We also installed white powder coated aluminium window sills with white patent reveals.

We used a coloured acrylic render (Cream)

The bungalow was 160m<sup>2</sup>  
The 1930's bungalow was completely transformed to a modern day bungalow.

The insulation used here was 100mm Grey EPS with a U Value of 0.27.

Heating bills were reduced by 48%.

Utility fees not Included.



Gross Total	€20,500.00
Less Seai Grant transferred over to us	€-6,000.00
<b>Total cost to Home Owner</b>	<b>€14,500.00</b>

# Detached



## Mount Merrion

This detached bungalow in Mount Merrion was finished with white acrylic render finish.

We used white powder coated aluminium window sills.

We finished the complete bungalow with a white acrylic render.

The bungalow size was 120m<sup>2</sup>.

The insulation used here was 100mm Grey EPS with a U Value of 0.27. Heating bills were reduced by 53%.

Utility fees not Included.



*The colder it is outside, the warmer it is inside*

Gross Total	€18,800.00
Less Seai Grant transferred over to us	€-6,000.00
<b>Total cost to Home Owner</b>	<b>€12,800.00</b>

## Sutton

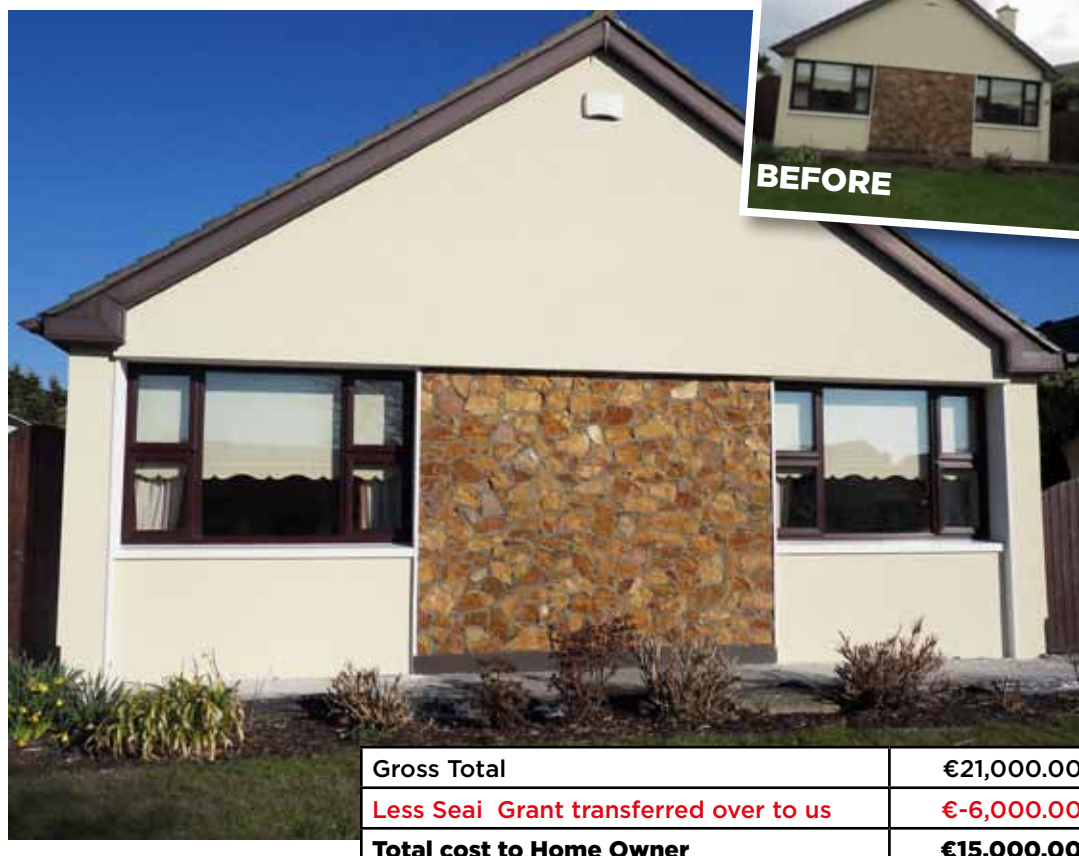
This detached bungalow in Sutton was finished with coloured acrylic render finish. We internally dry Line the front sitting room wall to keep the Howth Rock stone on the house Front. This will eliminate any cold bridging. We also installed white powder coated aluminium window sills.

We finished the complete bungalow with a coloured acrylic render (Cream/ Vanilla). The bungalow size was 160m<sup>2</sup>.

The insulation used here was 100mm Grey EPS with a U Value of 0.27.

Heating bills were reduced by 53%.

Utility fees not Included.



Gross Total	€21,000.00
Less Seai Grant transferred over to us	€-6,000.00
<b>Total cost to Home Owner</b>	<b>€15,000.00</b>



## Stillorgan

This detached bungalow in Stillorgan was finished with white (100%) marble chip dashed finish to the house front.

The dashing was embedded in to a white receiver/base coat.

We also installed white powder coated aluminium window sills.

We finished the back and both gables with an acrylic render (white bright acrylic).

House size was 130m<sup>2</sup>

The insulation used here was 100 mm Grey EPS with a U Value of 0.27.

Heating bills were reduced by 53%.

Utility fees not Included.



<b>Gross Total</b>	<b>€17,800.00</b>
<b>Less Seai Grant transferred over to us</b>	<b>€-6,000.00</b>
<b>Total cost to Home Owner</b>	<b>€11,800.00</b>

## Dalkey

This detached house in Dalkey was finished with white silicone based render finish.

We also installed white powder coated aluminium window sills.

We finished the complete house with a white silicone based render Bright White

The insulation used here was 100mm Grey EPS with a U Value of 0.27.

The house size was 200m<sup>2</sup>

Heating bills were reduced by 48%.

Utility fees not included.



<b>Gross Total</b>	<b>€28,000.00</b>
<b>Less Seai Grant transferred over to us</b>	<b>€-6,000.00</b>
<b>Total cost to Home Owner</b>	<b>€22,000.00</b>



This detached house in Raheny was finished with country cream acrylic finish.

We also installed white powder coated aluminium window sills, with patent reveals. We installed fern stone to create a natural look to the front façade, this kept the house in sync with the neighbors and street.

The insulation used here was 150mm Grey EPS with a U Value of 0.27. The house size was 220m<sup>2</sup>.

The flat roof on the garage was insulated with 100mm PIR and a trocrol rubber membrane finish.

Heating bills were reduced by 60%.

Utility fees not Included.



**Detail 1**



**Detail 2**

Gross Total	€34,000.00
Less Seai Grant transferred over to us	€-6,000.00
<b>Total cost to Home Owner</b>	<b>€28,000.00</b>



## Blackrock

This detached bungalow in Blackrock was finished with white (90%) and 10% black marble chip dashed finish to the front. The dashing was embedded in to a white receiver/base coat. Patent reveals were installed.

We also installed white powder coated aluminium window sills.

We finished the back and both gables walls with a white acrylic render (Bright White). House was 170m<sup>2</sup>

The Insulation used here was 100 mm Grey EPS with a U Value of 0.27.

Heating bills were reduced by 52%.

Utility fees not Include.



Gross Total	€23,500.00
Less Seai Grant transferred over to us	€-6,000.00
<b>Total cost to Home Owner</b>	<b>€17,500.00</b>

## Double the finish



Both house's were dashed with 75% white and 25% brown marble chip dashing with In Line Quoin Stones.

Both home owners received a €350 discount for insulating both houses together.



*The colder it is outside, the warmer it is inside*



# Window Sills

## Powder Coated Window Sills.

Powder coated window sills are long lasting and also comes in any RAL colour.



## Insulated Over Sills

We have a full range of insulated over sills. These can be finished in white or coloured acrylic paint or render. Also comes in a granite effect finish.



## Granite Sills

We have a full range of granite effect renders. This can be used on window sills, Quoin Stones and plinth. Granite effect can give a unique feature or effect to any home.







*The colder it is outside, the warmer it is inside*

## RAL Powdered coated Window Sills

Here we have coloured power coated window sill in black and ivory.

We can use any RAL colour in our powder coating process. All aluminium window sills are custom made and the power coat is baked on in an oven.



## Custom Curved Sills

Here we have custom made curved window sills for bay windows powder coated in white.

We can use any RAL colour in our powder coating process. All aluminium window sills are custom made and the power coat is baked on in an oven.





## Replicated Brick work used to Enhance or Replicate any home.





## Replicated Brick



# Mouldings & Quoin Stone

## Inverted Quoin Stones



Here we inverted the Quoin Stones in to the render.  
It gave a unique look that replicated the 1900's style

## In Line Quoin Stones



Granite effect Quoin Stones and window sills.

## Mouldings.

We install a variety of mouldings all shapes and sizes. We can create many different designs and arches.



## Staggered Quoin Stones.

Here we have staggered and inline Quoin Stones. They give an eye catching detail and cost €20 each supplied & fitted.





# Brighten up your home with Empire Painting & Decorating



**Welcome to Empire Painting and Decorating! We are a fully qualified Irish Company with over a decade experience. We pride ourselves on our dedication to each and every customer with 100% satisfaction guaranteed.**

Based in Lusk, Co. Dublin, we service all areas of Dublin, surrounding counties and nationwide. We offer a complimentary consultation in which we build personal relationships with our customers, give expert advice on colour coordination and a detailed quotation to follow.



## Domestic

Our services include anything ranging from one room to an entire house. No job is too big or too small! We offer expert advice on colour and texture pallets and listening to our clients to help create the perfect home for them. We ensure the correct paint is used and we prepare all surfaces to guarantee longevity and value for money.

**15 years experience**  
**Fully insured**  
**Fully qualified**

**EMPIRE**   
**PAINTING & DECORATING**  
| DOMESTIC & COMMERCIAL | PAPER HANGING | INTERIORS & EXTERIORS |

Contact: Chris Smyth  
26 Ministers Road Lusk  
Co. Dublin.

**Phone: 085 835 5396**

Email: [info@empirepaintinganddecorating.ie](mailto:info@empirepaintinganddecorating.ie)  
Web: [www.empirepaintinganddecorating.ie](http://www.empirepaintinganddecorating.ie)



## What our customer have to say...

*"Chris at Empire Painting and Decorating was very knowledgeable and helped me decide upon colour plans that made best use of natural daylight and wall-washed lighting. Extremely reasonably priced too, I highly recommend Chris to anyone looking to freshen up their home or business." - Paul*

*"Hi everyone! Just had Chris revamp some well overdue rooms in the house, and he was brilliant. Always on time, excellent workman ship, really tidy and trustworthy to have in your house. I only recommend when credit is due, and it most certainly is here! Thanks so much! Happy to recommend and share!" - Caroline*

*"Hi had empire in my house for week working all my rooms the work was so professional and clean you would not even know anyone was there thank you Chris for fabulous job would highly recommended him" - Harriett*

# Warm Living Central Heating & Plumbing Services from DG Plumbing



**DG Plumbing & Heating are a plumbing & heating company based in Rush, County Dublin and cover all the Dublin and the greater Dublin area.**

We are involved in plumbing & heating the last 18 years. In those 18 years we have covered numerous projects and have experience in the industrial, commercial and domestic sector.

We have 3 full-time engineers and all our engineers are fully vetted, fully insured and trained to the highest standards.



*David Gaffney the man behind Dublin Gas Heating & Plumbing. I have been working as a plumbing and heating specialist for over 18 years now and have a vast range of experience in all aspects of domestic and commercial plumbing. I have covered projects from houses, schools, restaurants to hotels. Please feel free to contact me directly on any aspect of the services we provide. I look forward to helping you make your home a warmer and cosier living experience*



**Gas & Oil Boilers  
Servicing & Repairs  
Central Heating  
Renewable Energy**

**67 Taylours Point,  
Rush, Co. Dublin.  
M 086 842 7171  
T 01 894 9978  
E david@dgplumbing.ie  
W www.dgplumbing.ie**

## Dublin Gas Heating and Plumbing

We have a philosophy that you can never have enough knowledge. So we attend courses throughout Ireland and the UK to keep us ahead of our competitors. This is why we have such a good reputation and have actually grown our business during the recession.

### What grants are available?

Grants are fixed for each type of measure as indicated in the table below.

All applicants must carry out a Building Energy Rating (BER) on completion of works. \*A BER grant is only payable once as part of a works grant.

SEAI Better Energy Home scheme		
Heating System	Heating Controls with Boiler Oil or Gas) Upgrade	€700
	Carbon Credit Incentive	€420



## Flushing your Radiators for higher efficiency

Power flushing is an effective measure to clean out the sludge that accumulates in your central heating system including, pipework, radiators and your boiler.

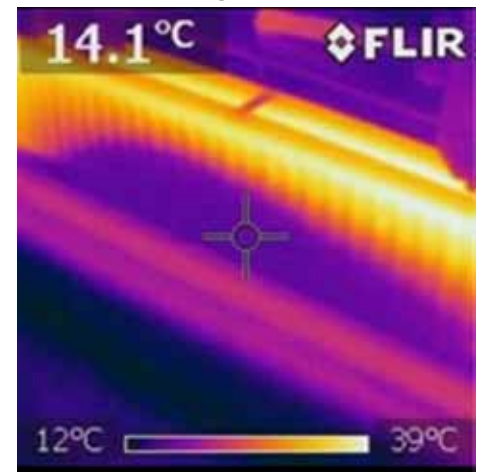
Your System is able to work with minimal effort after the flush is completed. After Power Flushing, your central heating system will function as well as a new system and will be up to 40% more efficient – no more cold radiators or noisy boilers!

A flushed system meaning radiators heat quicker, rooms get warm a lot faster without the need to turn your heating on to maximum, all resulting in less energy being consumed which will be reflected with big savings on your energy bills.

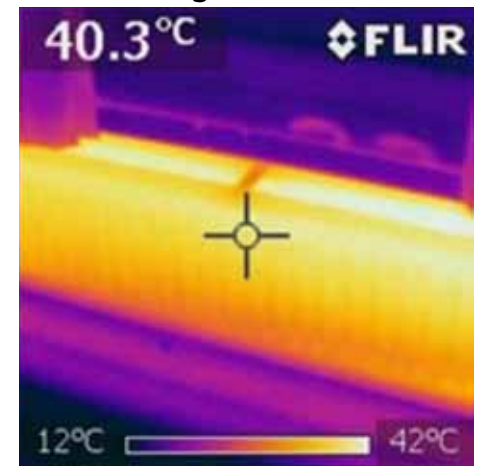


Using a heat detection camera we identify the inefficiency of each radiator before a flushing, and see the heat efficiency improvements after the flushing

**Before Flushing 14.1°**



**After Flushing 40.3°**



## Gas & Oil High Efficiency Boiler Installation

Upgrading your heating system to an A-Rated system is highly recommended to ensure you gain the best level of efficiency for your home.

A new boiler can save you over 30% on your heating bills as well as improve the warmth and comfort of your home. A rated condensing boilers have an efficiency that start from 93% and above.

Your standard efficiency non condensing boiler could be running as low as 60%. We recommend replacing your boiler if is 10 years old or more due to running costs and the possibility of breakdowns.

The range of gas boilers we install have guarantees of 7 & 10 years



**Gas & Oil Boilers  
Servicing & Repairs  
Central Heating  
Renewable Energy**

## Heating controls and zoning of system

By separating your hot water and radiators we can drastically reduce your energy bills. This allows you to turn on your space heating (radiators) and your hot water independently and at times that suit you. For Example – during the summer you may not need your radiators on, so with our modern controls this will allow you to heat your hot water cylinder only, eliminating the need to use your expensive immersion.

Where possible we can install a completely separate zone for the bedroom areas and by using thermostats on the radiators it will give you fine control over each room, increase your comfort levels and in turn saving you further costs on your energy bills

**67 Tayleurs Point,  
Rush, Co. Dublin.**

**M 086 842 7171**

**T 01 894 9978**

**E david@dgplumbing.ie**

**W www.dgplumbing.ie**



## Conservatory Designs by Brightspace

**Brightspace is THE modern building concept created by Conservatory Designs to extend and adapt clients homes to create a cost effective, warm and energy efficient Brightspace for all the family to enjoy.**

The Brightspace concept offers many exciting possibilities for extending your home to create more room or to adapt your existing home to be usable in all seasons. The Brightspace range includes glazed roofs, solid roofs, and hybrid roof which combine the glazed and solid roof to create a new living or dining room.

Coupled with our exciting range of new rooms, the Brightspace range also includes our range of energy efficient Ultrawarm Windows, doors and roof lanterns and our hugely successful Ultrawarm glazing

range which allows homeowners keep their existing uPVC window frames and replace the glass with a range of modern glazing solutions in include solar reflective glass or south facing aspects to keep the rooms cooler and Low Iron glass for north facing rooms to maximise the light transmission to darker rooms.

Conservatory Designs have been designing and building Conservatories in Johnstown, Naas since 1989. The traditional Conservatory has evolved a lot in the last 30 years and so have our team. The Brightspace range of building solutions represents a combination of a fantastic team of people with a lifetime of experience together with the most modern building solutions in glass available in the market.



FOR FURTHER  
INFORMATION ON  
THE BRIGHTSPACE  
RANGE PLEASE  
FEEL FREE TO VISIT  
OUR SHOWROOM AT  
JOHNSTOWN  
GARDEN CENTRE,  
JOHNSTOWN,  
NAAS, CO. KILDARE

OPEN 7 DAYS A WEEK  
OR CONTACT OUR  
CUSTOMER CARE TEAM  
7 DAYS A WEEK ON  
**045 844 002**

Brightspace at Conservatory Designs  
Johnstown Garden Centre, Naas  
Co. Kildare. Tel: 045 844002  
Website: <https://conservatorydesigns.ie/>



**Contact: 045 844 022**

**Visit: [www.conservatorydesigns.ie](http://www.conservatorydesigns.ie)**



# Throw away your wollies

Upgrade old glazing to Ultrawarm Glazing's "A" rated heat retaining double glazing and keep your frames.

## The benefits

With 25% of heat loss in the home occurring through windows and doors, bad quality glazing in your home can result in poor insulation standards, cold rooms, increased heating bills and most importantly a lack of comfort. While most homes built in Ireland in the last 20 years were fitted with double glazed windows these windows may not be as energy efficient as you might wish. Recent advances in glazing technology has led to huge advances in the insulation values offered over traditional double glazed units.

## How does it work

The Pilkington Optitherm range are high performance, coated low-e glass products specially developed for use in Insulating Glass Units (IGU's) to help with energy saving. Low-e glass has a microscopically thin, transparent coating - it is much thinner than a human hair - that reflects long long-wave infrared energy (or heat) back into the room. The coating acts in much the same way as a flask or thermos, put something warm in there and it stays warm, put something cold in the and it stays cold. Put your heating on in your room and the room stays warm. That is the basic principal and it works extremely well.

For further information or if you would like a demonstration please call to our showroom where we can show you the insulating properties of the glass using an infrared lamp.



Contact us  
for a quote  
today!

Contact us today

Johnstown Garden Centre, Naas, Co. Kildare.

Tel. 01 5311 279

# VISIT OUR DEDICATED SHOWROOM

## BY APPOINTMENT ONLY TEL: 01 848 3115



**ABSOLUTE ACRYLICS**  
EXTERNAL INSULATION  
*Professionals*

*The colder it is outside, the warmer it is inside*



You are welcome to visit our showroom and view our wide range of Dashed Finishes, Acrylic Finishes, Brick Effect and powdered coated Aluminium Window sills and Insulated Window sills. We also have Quoin stones, Decorative bands and Mouldings or you to choose from. Our showroom is strictly by appointment only.

**Opening times vary from late afternoons and Saturday morning.**  
**So please call Noel to make your appointment today on 086 365 4911.**

**Contact: 086 365 4911**

**Visit: [www.warmliving.ie](http://www.warmliving.ie)**