

WarmLIVING.ie

External Home Insulation Made Easy...& Affordable

Issue No.



New increased Grants Now Available for your Home

WELCOME TO THE FOURTH EDITION OF IRELANDS HOME EXTERNAL INSULATION CATALOGUE



HELLO AND WELCOME TO THE FOURTH EDITION OF WARMLIVING.IE

My name is Noel Whelan and I'm the owner of Absolute Acrylics Ltd. We specialize in External Insulation, Attic insulation and Boiler upgrades.

Over the last 15 years working in the Insulation industry we have successfully Insulated over 4,000 houses's in the Dublin and surrounding areas. We have successfully applied and received Seai grants for all our clients.

Along the way we have met and worked with several other professionally minded Sub Contractors, General Contractors and Architects.

Dave Gaffney of DG Plumbing and Heating has been Installing New High Condensing Boilers and setting up zoned areas with Seai grant approval for Absolute Acrylics along with his own work. DG Plumbing and heating are fully registered RGI and Seai and Insured.

Kind Regards
Noel Whelan

Special Thanks to our contributors



The colder it is outside, the warmer it is inside

Contact: Noel Whelan
Absolute Acrylics Limited,
8 Edenmore Grove, Raheny, Dublin 5.
M: 086 365 4911 Tel: 01 848 3115
Email: info@abac.ie
Web: www.abac.ie



Contact: David Gaffney
67 Tayleurs Point, Rush, Co. Dublin.
Mobile: 086 842 7171 Tel: 01 894 9978
Email: david@dgplumbing.ie
Web: www.dgplumbing.ie

GRANTS AVAILABLE FROM SEAI FOR ENERGY SAVING WORK ON YOUR HOME

This year Credit Unions and SEAI are teaming up to help homeowners reduce their energy bills when upgrading, Boiler, Heating controls, Windows and Insulation.

For every energy efficient loan drawn down at your credit unions reduced rate SEAI will give you a substantial grant towards the cost of the works.

How to get Grants and Funding

1. We will carry out a FREE SURVEY of your home and advise you on the best energy saving solutions.
2. Process your Grant Application with SEAI securing you substantial Grant Aid

Various Credit Unions offer reduced loan rates and you could qualify for the SEAI grant. Normal lending Terms & Conditions

apply. Loans will be subject to affordability and your Credit Union is regulated by the Central Bank of Ireland.

If you are not already a Credit Union member, joining is easy and can be done during the loan application process.

In a nutshell

You get a reduced loan rate, more grant aid, and are saved the hassle of making an application to SEAI for refunds or grants

So call Absolute Acrylics today for further details and to arrange your FREE home survey telephone: 086 365 4911

CONTRACTOR RATING

SEAI is pleased to note your good performance and trusts that this level will be maintained in the future.



The colder it is outside, the warmer it is inside

We are classified as a Green Zone First Class Contracting Company by the SEAI



What our customers have to say...



Edel and Dermot

What made you think or consider External Insulation for your home?

The house was very cold and very damp. We were losing a lot of heat through the walls as the house has not been insulated properly. We have sub floors a lot of heat was being lost through house.

Did you avail of the SEAI and Credit union 35% grant scheme?

Yes we did.

Do you feel that the SEAI and Credit Union 35% scheme was financially worth- while?

Absolutely, basically meant for us, we were able to get more work done otherwise we would not been able to afford all three – the external insulation attic and boiler up-grade done without the aid of the finance scheme from the SEAI and the Credit Union at that time.

Did you have to complete all the paper work for the Grants?

No. The Credit Union took care of all the necessary paperwork for us.

How did you hear about Absolute Acrylics Ltd?

A recommendation came from a family member.

What measures did you have installed, External Insulation, Attic Insulation, Boiler and Heating System Up-grade?

We had all three done - External Insulation, Attic and our boiler upgraded.

How do you feel the project was supervised and the overall standard of workmanship?

The job was very well organized. The workmanship was excellent. The men were very reliable. Good communication skills. Overall, we were very happy with the work and workmanship of Absolute Acrylics.

Can you feel the difference in your home?

Absolutely! We have no more dampness in the house. No more loss of heat. We can actually feel the warmth in the house. Rarely turn the heating on anymore. The draft and dampness are totally gone from the house, which was a big issue for us!

Did you receive a Guarantee?

Yes we did. We received a 10 year Guarantee from Absolute Acrylics Ltd.

Would you recommend Absolute Acrylics Ltd.?

Absolutely and if I am totally honest would not recommend any other Company to do the External Insulation.



Sandra Hanapy

What made you think or consider External Insulation for your home?

House was very cold especially the Gable wall is big. The walls were freezing cold, front, side and back of house and External Insulation was the best way forward for us.

How did you hear about Absolute Acrylics Ltd?

I had seen Absolute Acrylics' vans in the area and somebody told me that they saw house being External Insulated in Artane. I went to Artane to take a look at the house. I was very happy in what I saw and then I contacted Absolute Acrylics.

Did you have to complete any paper work for the SEAI Grants?

No, Absolute Acrylics did all the paperwork for me.

What measures did you have installed?

I had A Rated Windows installed and Patio doors front and back and the External Insulation.

How did you feel the project was supervised and the over-all standard of workmanship?

Standard of workmanship was excellent. No problems at all from start of the house until it was finished. The men

were very efficient. They were very punctual; they started work the same time every morning and finished the same time every evening. They cleaned up after them. They were very polite and no bother having them around working on the house

How does your house looks after the External Insulation had been completed

It looks fantastic. I have received numerous of complements from my neighbours on my road. Even people I don't even know have approached me and telling me how well my house looked.

Did you receive a Guarantee

Yes I did. I received a 10 year guarantee.

Would you recommend Absolute Acrylics

Yes definitely and I would highly recommend Absolute Acrylics. The overall standard of the workmanship was excellent.



The colder it is outside, the warmer it is inside

Semi Detached Homes

Glasnevin



This 4 bed semi detached house in Glasnevin was finished with white (90%) and 10% brown marble chip dashing.
The dashing was embedded in to a White Receiver/Base coat.
White patent reveals were installed.
The replicated brick work at the front was 105 rustic with white pointing.
We also installed white powder coated aluminium window sills.
We finished the back and gable with a white acrylic render.

The insulation used here was 100mm Grey EPS with a U Value of 0.27.
Heating bills were reduced by 49%.

Utility fees not Included.

Replicated brick not included

Gross Total	€23,900.00
Less Seai Grant transferred over to us	€-6,050.00
Final cost to Home Owner	€17,850.00



ABSOLUTE ACRYLICS
EXTERNAL INSULATION
Professionals

The colder it is outside, the warmer it is inside

Semi Detatched Homes

Beaumont



Gross Total	€19,050.00
Less Seai Grant transferred over to us	€-6,050.00
Final cost to Home Owner	€13,000.00

This 3 bed semi detached house in Beaumont was finished with white (100%) marble chip dashed finish to top section at front. The dashing was embedded in to a White Receiver/Base coat. White patent reveals were installed. The brick work at the front was cavity pumped. We also installed white powder coated aluminium window sills. We finished the back and gable with a white acrylic render.

The insulation used here was 100mm Grey EPS with a U Value of 0.27. Heating bills were reduced by 49%.

Utility fees not Included.

Dundrum



Gross Total	€21,500.00
Less Seai Grant transferred over to us	€-6,050.00
Final cost to Home Owner	€15,450.00

This 4 bed semi detached house in Dundrum was finished with Cream Acrylic Render.

The internal garage wall was also insulated using 100mm K5 Phenolic Insulation. We also installed White Powder coated Aluminium Window sills with patent reveals. 110m² Area

The insulation used here was 150 mm Grey EPS with a U Value of 0.21

Heating bills were reduced by 57%.

Utility fees not Included.

Semi Detached Homes

Tallaght

This 3 bed semi detached house in Tallaght was finished with white (80%) and 20% black marble chip dashed finish to the complete house.

The dashing was embedded in to a white receiver/base coat.

We also installed white powder coated aluminium window sills. (Black) 120m² This is a 3 bedroom semi detached house.

The insulation used here was 100 mm Grey EPS with a U Value of 0.27.

Heating bills were reduced by 52%.

Building energy rating issued on every house (BER).

Utility Fees not Included.
All our Work comes with a 10 Year guarantee.



Gross Total	€21,550.00
Less Seai Grant transferred over to us	€-6,050.00
Total Cost to Home Owner	€15,500.00

Whitehall

This 3 bed semi detached house on Collins Ave in Whitehall was finished with white (80%) and 20% black marble chip dashed finish. (front Top Section)

The dashing was embedded in to a White Receiver/Base coat.

The lower front section was finished in Tuscany Render Brick with light grey pointing.

We also installed white powder coated aluminium window sills.

We finished the back with a coloured acrylic render (Vanilla) 110m².

The insulation used here was 100mm Grey EPS with a U Value of 0.27.

Heating bills were reduced by 50%.

BER Cert Included.

Utility fees not Included.



Gross Total	€21,550.00
Less Seai Grant transferred over to us	€-6,050.00
Total Cost to Home Owner	€15,500.00

Semi Detached Homes

Mount Merrion



This semi detached 4 bedroom house in Mount Merrion was finished with white (100%) marble chip dashing in a light grey receiver coat. Replicated quionn stones were also replicated. White patent reveals were installed. The replicated brick work at the front was 105 rustic with white pointing. We also installed white insulated window sills. We finished the back and gable with a white acrylic render.

The insulation used here was 100mm Grey EPS with a U Value of 0.27. Heating bills were reduced by 52%.

Utility fees not Included.

Replicated brick not iincluded.

Gross Total	€23,900.00
Less Seai Grant transferred over to us	€-6,050.00
Final cost to Home Owner	€17,850.00

Semi Detached Homes

Santry



This 3 bed semi detached house in Santry was finished beige grey coloured acrylic render finish. Quoin Stones were added to both sides at house front. (White/Staggered style) Patent reveals were installed. We also installed white powder coated aluminium window sills

The insulation used here was 100mm Grey EPS with a U Value of 0.27. Heating bills were reduced by 48%. BER cert include. Utility fees not Included.

Gross Total	€19,050.00
Less Seai Grant transferred over to us	€-6,050.00
Final cost to Home Owner	€13,000.00

Donaghmede



This 3 bed semi detached house in Donaghmede Ave was finished with White (75%) and 25% Brown Marble Chip dashed finish to complete house. The dashing was embedded in to a White Receiver/Base coat. We installed Quoin stones at both side of front. (Staggered) We also installed render brick at front panels. (Russett with red pointing) We also installed white powder coated aluminium window sills. (Dark Brown)

The insulation used here was 100 mm Grey EPS with a U Value of 0.27.

Heating bills were reduced by 50%. BER included.

Utility fees not Included. Replicated brock not included.

Gross Total	€ 21,600.00
Less Seai Grant transferred over to us	€-6,050.00
Final cost to Home Owner	€15,550.00

End of Terrace



This end of terrace 4 bed house in Donnybrook, D4 was finished with white (90%) and (10%) brown marble chip dashed finish. The dashing was embedded in to a white receiver coat.

We also installed replicated quoin stones and white insulated window sills. The lower front was finished with a real slip brick system. The insulation used here was 100 mm Grey EPS with a U Value of 0.27.

Heating bills were reduced by 50%.
Utility fees not Included.
Slip brick system not included

Gross Total	€23,900.00
Less Seai Grant transferred over to us	€-6,050.00
Final cost to Home Owner	€17,850.00

End of Terrace



Gross Total	€21,600.00
Less Seai Grant transferred over to us	€-6,050.00
Final cost to Home Owner	€15,550.00

Kimmage

This end of terrace house in Kimmage, D12 was finished with white (90%) and (10%) brown marble chip dashed finish. The dashing was embedded in to a white receiver coat.

Cream powder coated window sills were also used.

The insulation used here was 100 mm Grey EPS with a U Value of 0.27.

Heating bills were reduced by 50%.

Utility fees not Included.



Gross Total	€19,050.00
Less Seai Grant transferred over to us	€-6,050.00
Final cost to Home Owner	€13,000.00

Donnycarney

This end of terrace house in Finglas was finished with white (75%) and 25% brown marble chip dashed finish. The dashing was embedded in to a white receiver/base coat.

We also installed white powder coated aluminium window sills.

We finished the back with a coloured acrylic render (Cream/Vanilla)
Total area was 110m²

In line Quoin Stones were installed at the House front. Replicated brick effect was used on the lower front panels.

The insulation used here was 100mm Grey EPS with a U Value of 0.27.

Heating bills were reduced by 50%.

Utility fees not Included.

Marino

End of Terrace



This end of terrace house in Marino, D3 was finished with white (90%) and (10%) black marble chip dashed finish. The dashing was embedded in to a stoney grey receiver/base coat. This gives an aged look. The complete house was dashed finish.

We also installed white powder coated aluminium window sills.

120m² wall area.

The insulation used here was 100 mm Grey EPS with a U Value of 0.27.

Heating bills were reduced by 50%.

Utility fees not Included.

Rear extension and garden walls not included.



Gross Total	€21,600.00
Less Seai Grant transferred over to us	€-6,050.00
Final cost to Home Owner	€15,550.00



Ballyfermot

This end of terrace house in Ballyfermott was finished with white (75%) and (25%) brown marble chip dashed finish. The dashing was embedded in to a white receiver/base coat.

The complete house was dashed finish. Quoin Stones were installed at house front on both side in a staggered formation.

We also installed cream Powder coated Aluminium Window sills.
(Cream powder coat to match the windows)
Total wall area was 100m².

The Insulation used here was 100 mm Grey EPS with a U Value of 0.27.
Heating bills were reduced by 53%.
Utility fees not Included
ESB or Gas
BER included.

Gross Total	€21,600.00
Less Seai Grant transferred over to us	€-6,050.00
Final cost to Home Owner	€15,550.00

Mid Terrace

This mid terrace house in Coolock was finished with a black (10%) and white (90%) marble chip dashed finish.

The dashing was embedded in to a stone grey receiver/base coat.

We also installed black powder coated aluminium window sills.

Dashed finish to Front and Back of House.
65m² Area.

The insulation used here was 100mm Grey EPS with a U Value of 0.27.

Heating bills were reduced by 52%.

Board Gas or ESB fees not included.



Donaghmede

Gross Total	€13,550.00
Less Seai Grant transferred over to us	€-3,500.00
Final cost to Home Owner	€10,500.00



The colder it is outside, the warmer it is inside

Contact: 086 365 4911

Visit: www.warmliving.ie

Edenmore

Mid Terrace



This mid terrace house in Edenmore/Raheny was finished with vanilla acrylic render. The reveals were finished with white acrylic.

We also installed white powder coated aluminium window sills.
All new down pipes were install at no extra cost.

Air vents are Installed in every room. (All Jobs)

The insulation used here was 100 mm Grey EPS with a U Value of 0.27.

Heating bills were reduced by 48%.

Utlility fees not Included.

Gross Total	€12,500.00
Less Seai Grant transferred over to us	€-3,500.00
Final cost to Home Owner	€9,000.00

Dalkey

This detached house in Dalkey was finished with coloured acrylic render finish.

We also installed white powder coated aluminium window sills.

We finished the back with a coloured acrylic render (Cream).

The insulation used here was 100mm Grey EPS with a U Value of 0.27.
The house was 200m².

Heating bills were reduced by 55%.

Utility fees not Included.

Detached



Raheny

This detached house in Raheny was finished with coloured acrylic render.

We also installed white powder coated aluminium window sills.

We finished the house with a coloured acrylic render (Off White Ivory).
The house size was 170m².

The insulation used here was 100mm Grey EPS with a U Value of 0.27.

Heating bills were reduced by 50%.

Utility fees not Included.



Detached

Cabinteely



This detached house in Cabinteely was finished with a cream acrylic finish.

We also installed white powder coated aluminium window sills, with patent reveals. We installed fern stone to create a natural look to the front façade, this kept the house in sync with the neighbors and street.

The insulation used here was 100mm Grey EPS with a U Value of 0.27.

Heating bills were reduced by 50%.

Utility fees not Included.

Please Note

Detached houses come in all shapes and sizes and prices will vary accordingly. A SEAI grant of €8,050 is currently available for detached house owners.



Detatched



Mount Merrion

This detached house in Mount Merrion was finished with white (75%) and 25% brown marble chip dashed finish to the Front.

The dashing was embedded in to a white receiver/base coat.

We used almond acrylic render on the sides and back.

We also installed white powder coated aluminium window sills.

The house size was 115m²
The insulation used here was 100mm Grey EPS with a U Value of 0.27.

Heating bills were reduced by 52%.

Utility fees not Included.



The colder it is outside, the warmer it is inside

Deansgrange

This detached house in Deansgrange was finished with white (75%) and 25% brown marble chip dashed finish.

The dashing was embedded in to a white receiver/base coat.

We also installed white powder coated aluminium window sills.

We finished the back and gable walls with a coloured acrylic render (Almond)
Large detached 180m².

The insulation used here was 100mm Grey EPS with a U Value of 0.27.

Heating bills were reduced by 54%

Utility fees not Included.



Donaghmede

This detached house in Donaghmede was finished with durite marble chip dashed finish. The dashing was embedded in to a white receiver/base coat. We installed staggered Quoin Stones to create a final effect.

We also installed white powder coated aluminium window sills.

We finished the back and gable walls with a coloured acrylic render (Cream/Vanilla)

Detached house 155m².

The insulation used here was 100 mm Grey EPS with a U Value of 0.27. Heating bills were reduced by 50%.

Utility fees not Included.



Kildare

This detached bungalow in Kildare was finished with a coloured acrylic render.

We also installed white powder coated aluminium window sills with white patent reveals.

We used a coloured acrylic render (Cream)

The bungalow was 160m². The 1930's bungalow was completely transformed to a modern day bungalow.

The insulation used here was 100mm Grey EPS with a U Value of 0.27.

Heating bills were reduced by 48%.

Utility fees not Included.



Detatched

Mount Merrion



This detached bungalow in Mount Merrion was finished with white acrylic render finish.

We used white powder coated aluminium window sills.

We finished the complete bungalow with a white acrylic render.

The insulation used here was 100mm Grey EPS with a U Value of 0.27.

Heating bills were reduced by 53%.

Utility fees not Included.



The colder it is outside, the warmer it is inside

Sutton

This detached bungalow in Sutton was finished with a white acrylic render finish.

We also installed RAL coloured powder coated aluminium window sills.

We finished the complete bungalow with a coloured white acrylic render.

The insulation used here was 100mm Grey EPS with a U Value of 0.27.

Heating bills were reduced by 52%.

Utility fees not Included.



Dalkey

Detached



This detached house in Dalkey was finished with white silicone based render finish. We also installed white powder coated aluminium window sills.

We finished the complete house with a white silicone based render Bright White. The insulation used here was 100mm Grey EPS with a U Value of 0.27.

Heating bills were reduced by 48%.

Utility fees not included.

Please Note

Detached houses come in all shapes and sizes and prices will vary accordingly. A SEAI grant of €8,050 is currently available for detached house owners.

Detatched

Raheny



This detached house in Raheny was finished with country cream acrylic finish.

We also installed white powder coated aluminium window sills, with patent reveals. We installed fern stone to create a natural look to the front façade, this kept the house in sync with the neighbors and street.

The insulation used here was 150mm Grey EPS with a U Value of 0.27. The house size was 220m².

The flat roof on the garage was insulated with 100mm PIR and a trocrol rubber membrane finish.

Heating bills were reduced by 60%.

Utility fees not Included.

Please Note

Detatched houses come in all shapes and sizes and prices will vary accordingly. A SEAI grant of €8,050 is currently available for detached house owners.



Detail 1



Detail 2

Window Sills

Insulated Over Sills

We have a full range of insulated over sills. These can be finished in white or coloured acrylic paint or render. Also comes in a granite effect finish.



Replicated Brick

Brickwork



105 smooth replicated brick with white pointing



Multimix replicated brick with dark grey pointing

Brickwork

Replicated Brick



105 rustic replicated brick with dark grey pointing



105 rustic replicated brick with white pointing

Warm Living Central Heating & Plumbing Services



DG Plumbing & Heating are a plumbing & heating company based in Rush, County Dublin and cover all the Dublin and the greater Dublin area.

We are involved in plumbing & heating the last 18 years. In those 18 years we have covered numerous projects and have experience in the industrial, commercial and domestic sector.

We have 3 full-time engineers and all our engineers are fully vetted, fully insured and trained to the highest standards.



David Gaffney the man behind Dublin Gas Heating & Plumbing. I have been working as a plumbing and heating specialist for over 18 years now and have a vast range of experience in all aspects of domestic and commercial plumbing. I have covered projects from houses, schools, restaurants to hotels. Please feel free to contact me directly on any aspect of the services we provide. I look forward to helping you make your home a warmer and cosier living experience



**Gas & Oil Boilers
Servicing & Repairs
Central Heating
Renewable Energy**

Dublin Gas Heating and Plumbing

We have a philosophy that you can never have enough knowledge. So we attend courses throughout Ireland and the UK to keep us ahead of our competitors. This is why we have such a good reputation and have actually grown our business during the recession.

What grants are available?

Grants of €700 is available for Heating Control upgrade.

All applicants must carry out a Building Energy Rating (BER) on completion of works. *A BER grant is only payable once as part of a works grant.

67 Tayleurs Point,
Rush, Co. Dublin.

M 086 842 7171

T 01 894 9978

E david@dgplumbing.ie

W www.dgplumbing.ie

Flushing your Radiators for higher efficiency

Power flushing is an effective measure to clean out the sludge that accumulates in your central heating system including, pipework, radiators and your boiler.

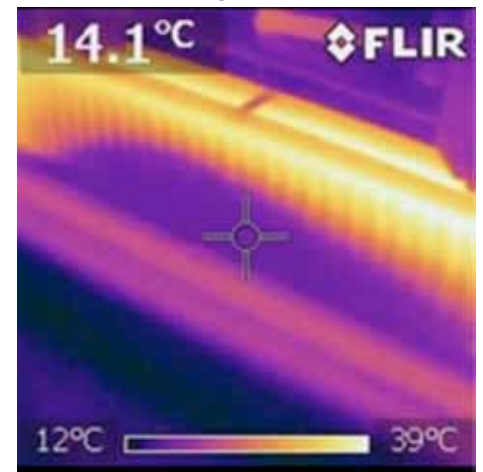
Your System is able to work with minimal effort after the flush is completed. After Power Flushing, your central heating system will function as well as a new system and will be up to 40% more efficient – no more cold radiators or noisy boilers!

A flushed system meaning radiators heat quicker, rooms get warm a lot faster without the need to turn your heating on to maximum, all resulting in less energy being consumed which will be reflected with big savings on your energy bills.

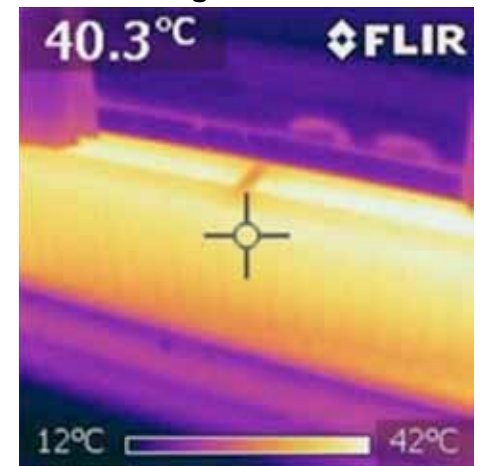


Using a heat detection camera we identify the inefficiency of each radiator before a flushing, and see the heat efficiency improvements after the flushing

Before Flushing 14.1°



After Flushing 40.3°



Gas & Oil High Efficiency Boiler Installation

Upgrading your heating system to an A-Rated system is highly recommended to ensure you gain the best level of efficiency for your home.

A new boiler can save you over 30% on your heating bills as well as improve the warmth and comfort of your home. A rated condensing boilers have an efficiency that start from 93% and above.

Your standard efficiency non condensing boiler could be running as low as 60%. We recommend replacing your boiler if is 10 years old or more

Heating controls and zoning of system

By separating your hot water and radiators we can drastically reduce your energy bills. This allows you to turn on your space heating (radiators) and your hot water independently and at times that suit you. For Example – during the summer you may not need your radiators on, so with our modern controls this will allow you to heat your hot water cylinder only, eliminating the need to use your expensive immersion.

Where possible we can install a completely separate zone for the bedroom areas and by using thermostats on the radiators it will give you fine control over each room, increase your comfort levels and in turn saving you further costs on your energy bills



**Gas & Oil Boilers
Servicing & Repairs
Central Heating
Renewable Energy**

67 Tayleurs Point,
Rush, Co. Dublin.

M 086 842 7171

T 01 894 9978

E david@dgplumbing.ie

W www.dgplumbing.ie



The House of Scandinavian Finishing Materials

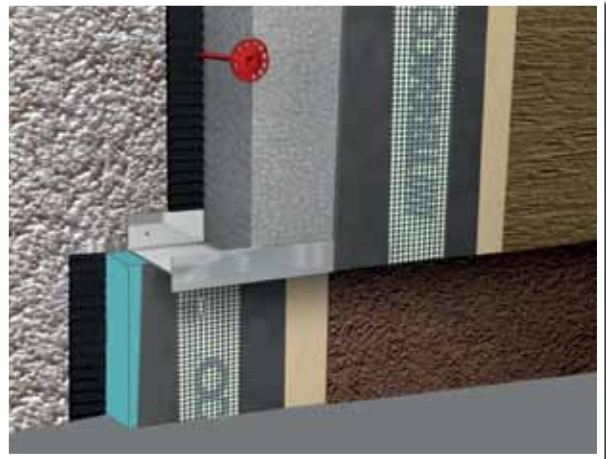
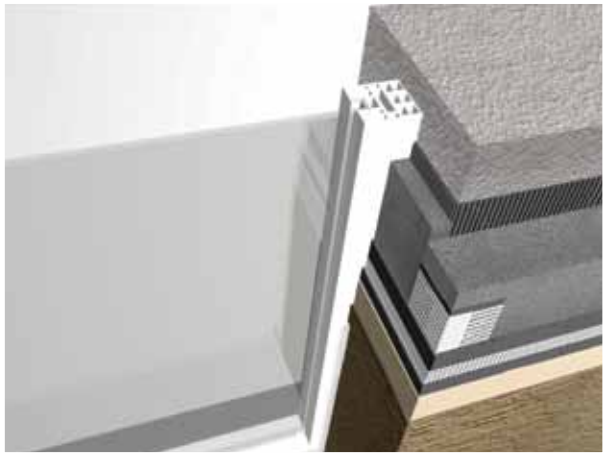
EXTERNAL INSULATION



NSAI
Agrément

IRISH AGREEMENT BOARD
CERTIFIED SYSTEM

Absolute Acrylics Ltd.
Reg. No. IAB/E004



**25 COUNTRIES
40 YEARS
CAN'T BE WRONG**

Replication work in Mount Merrion



This semi-detached house in Mount Merrion was built in the 1930's. The whole estate was built with unique features and designer plasterwork.

While externally insulating this house and several others in the area Absolute Acrylics was able to replicate the designer plasterwork. We modernised the window sills with powdercoated aluminium but used a terracotta red to replicated the original tile windowsills.

The insulation used here was 100mm Grey EPS with a U Value of 0.27.

Our customer and their neighbours were very pleased with the outcome.

References available on request



ABSOLUTE ACRYLICS
EXTERNAL INSULATION
Professionals

The colder it is outside, the warmer it is inside

New Fiberglass Roofing Solutions



BEFORE

- **CrysticROOF®** from Absolute Acrylics is a durable FiberGlass replacement for traditional roofing materials such as bitumen, felt and lead.
- Suitable for roof structures, walkways and balconies.
- Remains watertight and maintenance free for many years and can add significant value to a property.



AFTER

15
YEAR
GUARENTEE



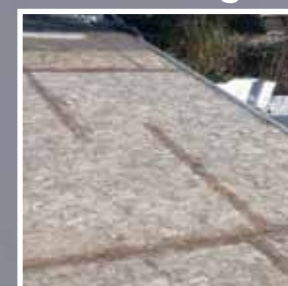
Expose Joices



New Insulation



New Covering



Ideal for:

- House Extensions | Commercial Properties
- Garages & Workshops | Heritage Buildings
- Dormer Windows | Balconies | Sheds

Contact: 086 365 4911

Visit: www.abac.ie

Important Changes to the Better Energy Homes Programme

The Minister for Communications, Climate Action and Environment (DCCAE), Denis Naughten T.D. is announcing a shift in the Government funded energy efficiency schemes, representing a major step in the transition towards decarbonising our heating and the Energy White Paper's vision of a low carbon energy future.

In this regard, we would like to inform you for a number of key changes to the Better Energy Homes grant programme, which will come into effect in 2022.

External Wall Insulation Grant Increase

The grant levels for External Wall Insulation will increase from February 2022, with grant levels ranging from €2,750 to €6,000.

New improved grant levels under Better Energy Homes from February 22022

External Wall Insulation		Current	New
		€6,000	€8,000
	Detached	€6,000	€8,000
	Semi-detached or end of terrace	€4,500	€6,000
	Mid terrace or apartment	€2,750	€3,500

Absolute Acrylics and your SEAI Grant Application

Absolute Acrylic will apply for the grant on your behalf. We will then deduct the grant amount from your gross total. You simply pay the balance and we will claim the grant back from the SEAI.

In order for Absolute Acrylics to do this we must comply to all SEAI regulations. We must insulate the complete house, all the walls to the U value of 0.27 or less.

If there is a new build extension that is fully insulated to SEAI standard, we are allowed to exclude this from the installation and still qualify for the SEAI grant. Please note, we would need to verify.

We normally do this from the drawings, opening up a socket or looking into a vent cover using a bore scope camera.

Please note your attic must also be insulated to qualify for the external insulation grant. We must also install the correct ventilation to SEAI standard.

If you have overhead services from the ESB, we will contact them to have them moved and refitted. We will also contact Bord Gais for moving and reinstating the Gas box.

We also remove and refit all down pipes, waste pipes, soil pipes, lights , alarm boxes and any other items that need addressing

VISIT OUR DEDICATED SHOWROOM BY APPOINTMENT ONLY TEL: 01 848 3115



ABSOLUTE ACRYLICS
EXTERNAL INSULATION
Professionals



You are welcome to visit our showroom and view our wide range of Dashed Finishes, Acrylic Finishes, Brick Effect and powdered coated Aluminium Window sills and Insulated Window sills. We also have Quoin stones, Decorative bands and Mouldings or you to choose from. Our showroom is strictly by appointment only.

**Opening times vary from late afternoons and Saturday morning.
So please call Noel to make your appointment today on 086 365 4911.**

**Absolute Acrylics Limited, Unit 2 Richmond House,
Newtown Avenue, Malahide Industrial Park, Dublin 17. D17C603
M: 086 365 4911 Tel: 01 848 3115 Email: info@abac.ie Web: www.abac.ie**

Contact: 086 365 4911

Visit: www.warmliving.ie